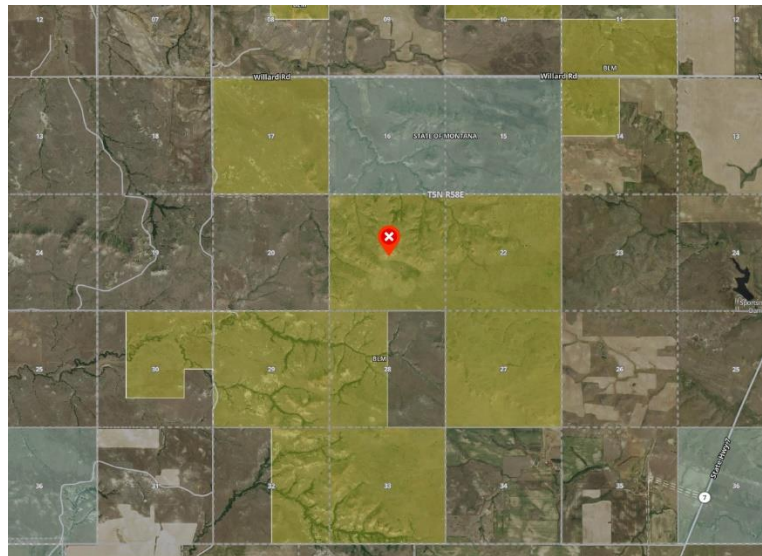


Important BLM Parcels with Access Identified for Disposal

As required by the Federal Land Policy and Management Act, for the past forty years the BLM has included in its Resource Management Plans (RMPs) lists of lands identified for potential disposal, including sale. While most such parcels are small and inaccessible, making them good candidates for targeted disposal, numerous tracts important for recreational access have been identified for potential sale, threatening public access. As proposed in the Public Lands in Public Hands Act, congressional approval would be required for the sale or transfer of publicly accessible tracts over 300 acres and for the sale of water adjacent tracts over 5 acres. These acreage limits would still allow for appropriate community development, while elevating scrutiny of the sale of public parcels important to outdoor recreation. The following examples highlight specific lands identified for potential disposal, including sale, by the BLM.

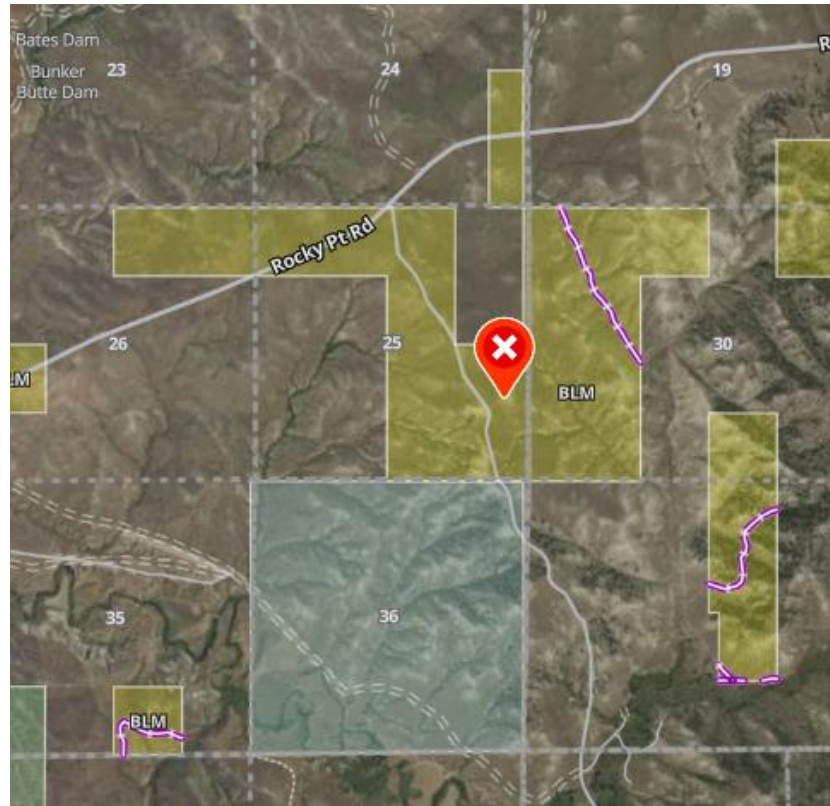
Miles City Field Office RMP. More than 5,000 acres of BLM land with open access from a public road identified by the agency to be potentially available for “all disposal methods, including sale.” This area of Montana is very popular for deer, antelope, and upland bird hunting and public access is limited. The Public Lands in Public Hands Act would elevate congressional scrutiny of the sale of such accessible parcels.



Pocatello Field Office RMP (2012). Two water adjacent tracts along the Snake River in Idaho that are identified for potential disposal—one is 50 acres, and the other is 19 acres. The Snake River is extremely popular for boaters, anglers, and waterfowl and upland bird hunters. Water adjacent public properties are precious and deserve a higher level of scrutiny to prevent their inappropriate sale.



Buffalo Field Office RMP (2015). This example shows publicly accessible BLM land identified for potential disposal. Note that this parcel provides public access to a neighboring state section that would most likely be lost if the BLM land was sold.



Eastern Colorado RMP (2024). A 1,175-acre BLM parcel along a County Road east of Canon City. Identified for disposal through all disposal methods, including sale. The Public Lands in Public Hands Act would appropriately require congressional approval for the sale of such accessible parcels.

